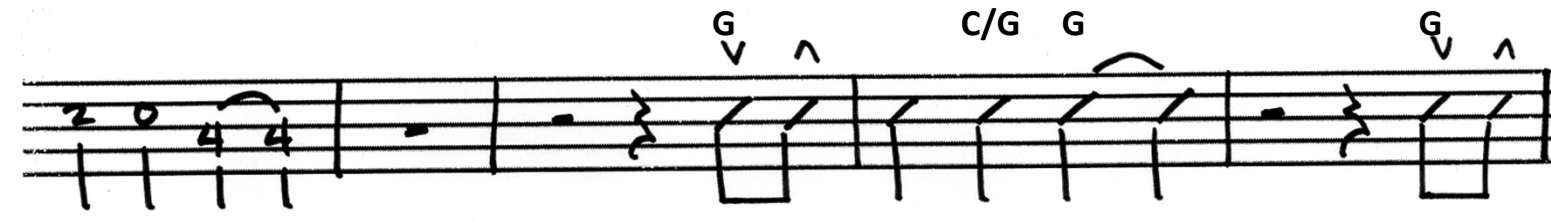
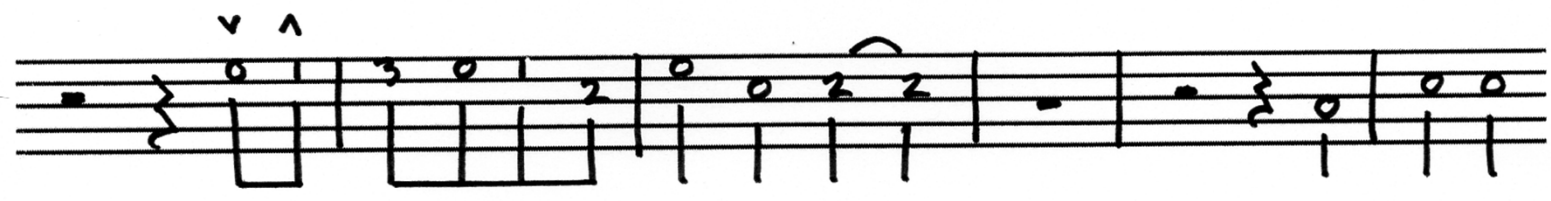
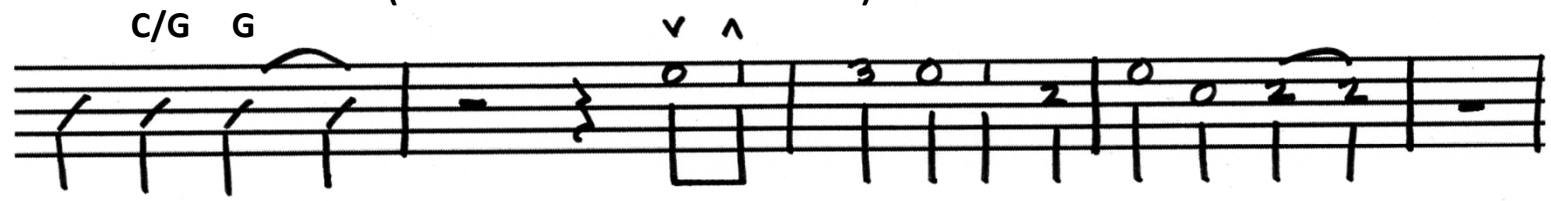


(BANJO PLAYS DURING SPACES)



G C/G G

C (PICK-STRUM)

G

D

G

C

G

Handwritten musical notation for a 12-measure piece on a single staff. The notation includes various note values (quarter, eighth, sixteenth notes), rests, and fingerings (1-3). The piece is divided into two systems of six measures each.

D

(G RUN)

G

GO TO *

Handwritten musical notation for the first staff of 'The Rose Tree'. The staff contains a melody in treble clef with a key signature of one flat (B-flat). The melody consists of quarter notes and eighth notes, with some notes beamed together. The lyrics 'The Rose Tree' are written below the staff.

ENDING SEQUENCE: G

G STRUM STRUM

G

G

A

D

G

G - - -